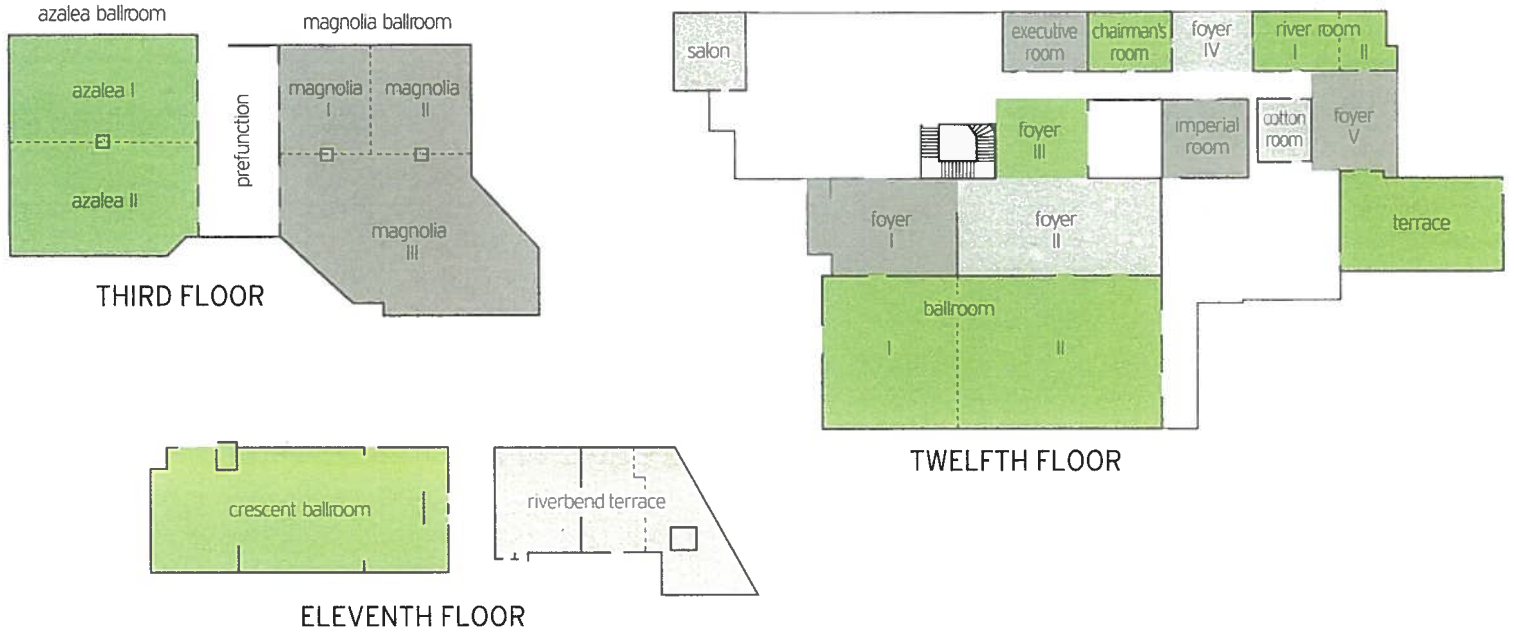


floor plans & capacity chart



ROOM	DIMENSIONS	SQUARE FEET	CEILING HEIGHT	BANQUET	THEATER	RECEPTION	CLASSROOM	CONFERENCE	HOLLOW SQUARE	U-SHAPE	EXHIBITS
THIRD FLOOR											
Magnolia Ballroom		5,466	12'	300	400	450	245	-	-	-	-
Magnolia I	27' x 37'	955	12'	60	90	50	30	30	30	27	-
Magnolia II	31' x 37'	1,137	12'	70	100	70	45	36	36	30	-
Magnolia III		3,374	12'	190	200	300	150	-	48	42	30
Magnolia I & II	37' x 58'	2,092	12'	140	150	160	80	44	80	48	-
Prefunction	27' x 63'	1,701	-	-	-	179	-	-	-	-	-
Azalea Ballroom	58' x 72'	4,079	12'	280	-	300	-	-	-	-	32
Azalea I	36' x 58'	2,026	12'	140	200	150	100	40	50	45	14
Azalea II	36' x 58'	2,053	12'	140	200	150	100	40	50	45	14
ELEVENTH FLOOR											
Crescent Ballroom	40' x 64'	2,560	12'	160	200	200	96	40	50	44	-
Riverbend Terrace	46' x 33'	1,380	-	86	-	120	-	-	-	-	-
TWELFTH FLOOR											
Ballroom	46' x 111'	5,106	15'	440	500, 300 R/S	600	325, 180 R/S	-	100	88	45
Ballroom I	46' x 41'	1,886	15'	150	220	200	105	40	48	40	-
Ballroom II	46' x 70'	3,220	15'	280	300	300	198	-	66	54	28
Foyer I	26.5' x 32'	848	10.6'	-	-	-	-	-	-	-	-
Foyer II	52' x 32'	1,664	10.6'	-	-	-	-	-	-	-	-
Terrace	31.7' x 58'	1,838.6	10.6'	120	200	200	90	34	52	45	20
Foyer V	26.5' x 32'	848	10.6'	-	-	150	-	-	-	-	-
Cotton Room	19' x 21'	399	10.6'	20	30	20	18	14	18	15	-
Imperial Room	26' x 25.6'	665	10.6'	40	56	30	27	18	24	21	-
River Room	18' x 47'	846	10.6'	60	90	60	48	34	36	33	-
River Room I	18' x 30'	540	10.6'	50	50	40	24	16	14	14	-
River Room II	18' x 17'	306	10.6'	20	20	20	16	12	-	10	-
Foyer IV	28' x 20'	560	10.6'	-	-	-	-	-	-	-	-
Chairman's Room	18' x 29'	522	10.6'	40	50	50	24	22	21	18	-
Executive Room	18' x 29'	522	10.6'	40	50	50	24	22	21	18	-
Foyer III	21' x 25'	525	10.6'	-	-	-	-	-	-	-	-
Salon	23.6' x 30'	708	10.6'	40	60	55	36	26	24	21	-

* Our meeting room capacities have been calculated using the Meeting Professionals International Comfort Calculator.